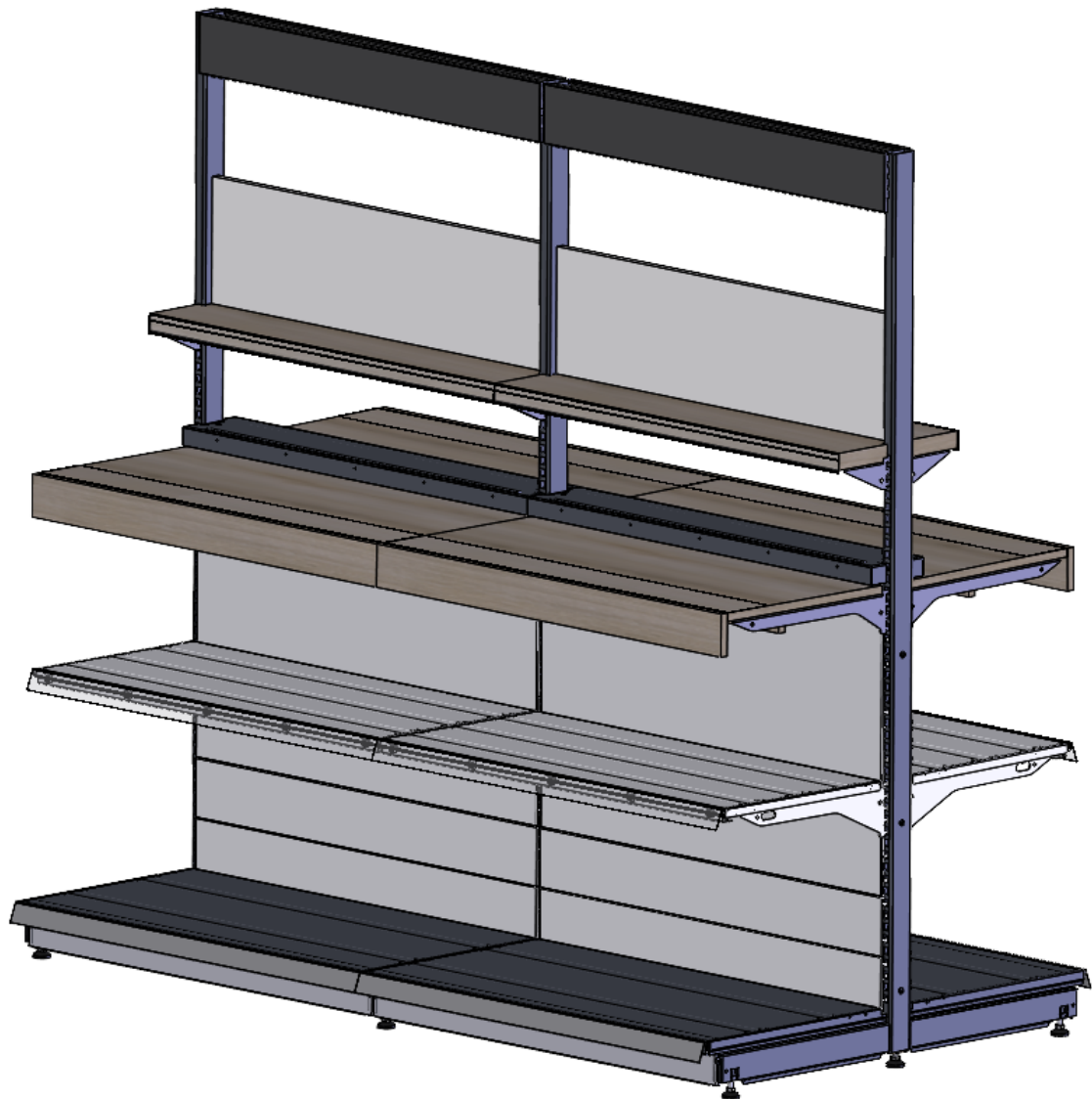


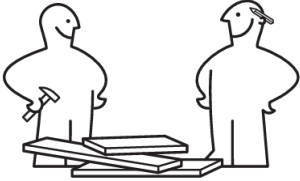


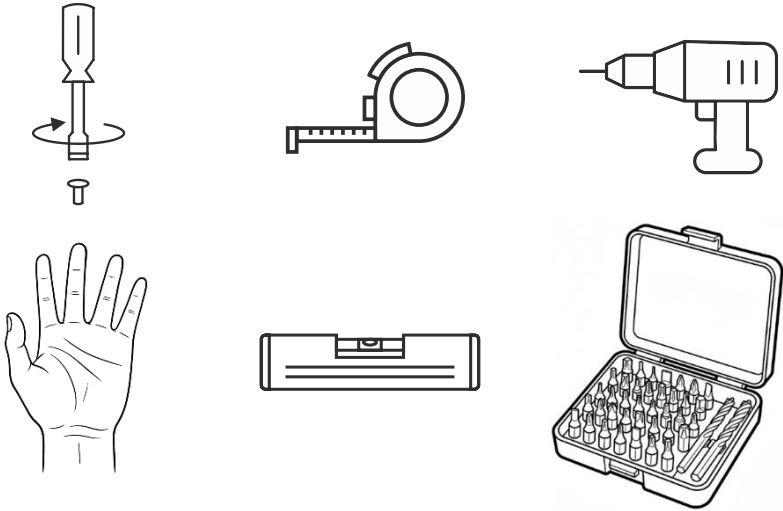
AS GONDOLA – BASE MODUL



ASSEMBLY INSTRUCTIONS

C-STI-009 and C-STI-010

STIHL

	<p>2 persons required for assembly 1 pallet and 1 package support uprights total weight 210 kg</p>
	<p>Ivo Fryauf: ivo.fryauf@umdasch.com +420724303815</p> <p>Václav Dopita: +420727861651 vaclav.dopita@umdasch.com</p>
	<p>Recommended protective equipment</p>
	<p>Tools required for assembly</p>



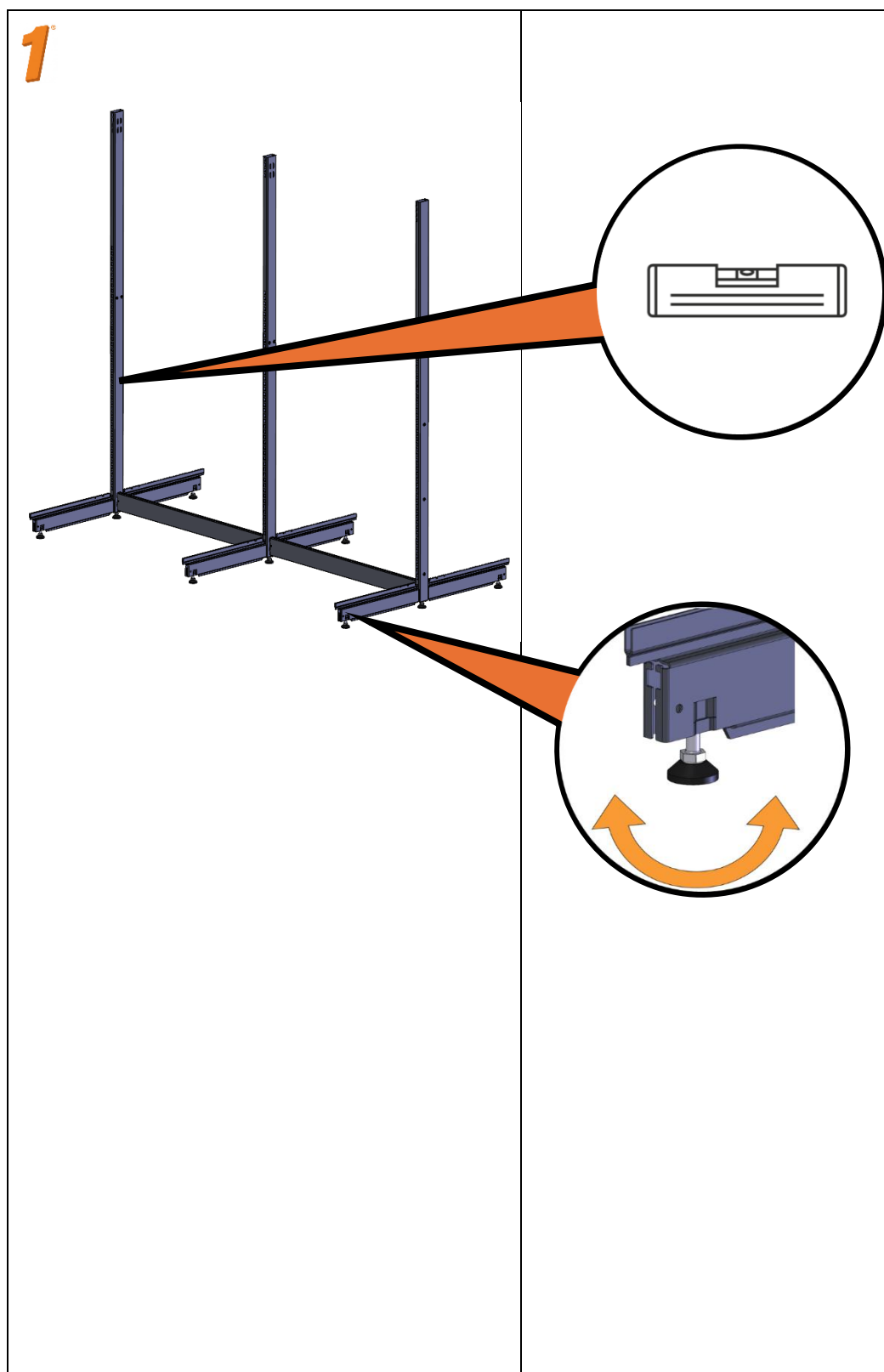
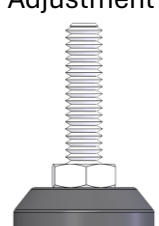

Load-bearing frame



ASSEMBLY INSTRUCTIONS

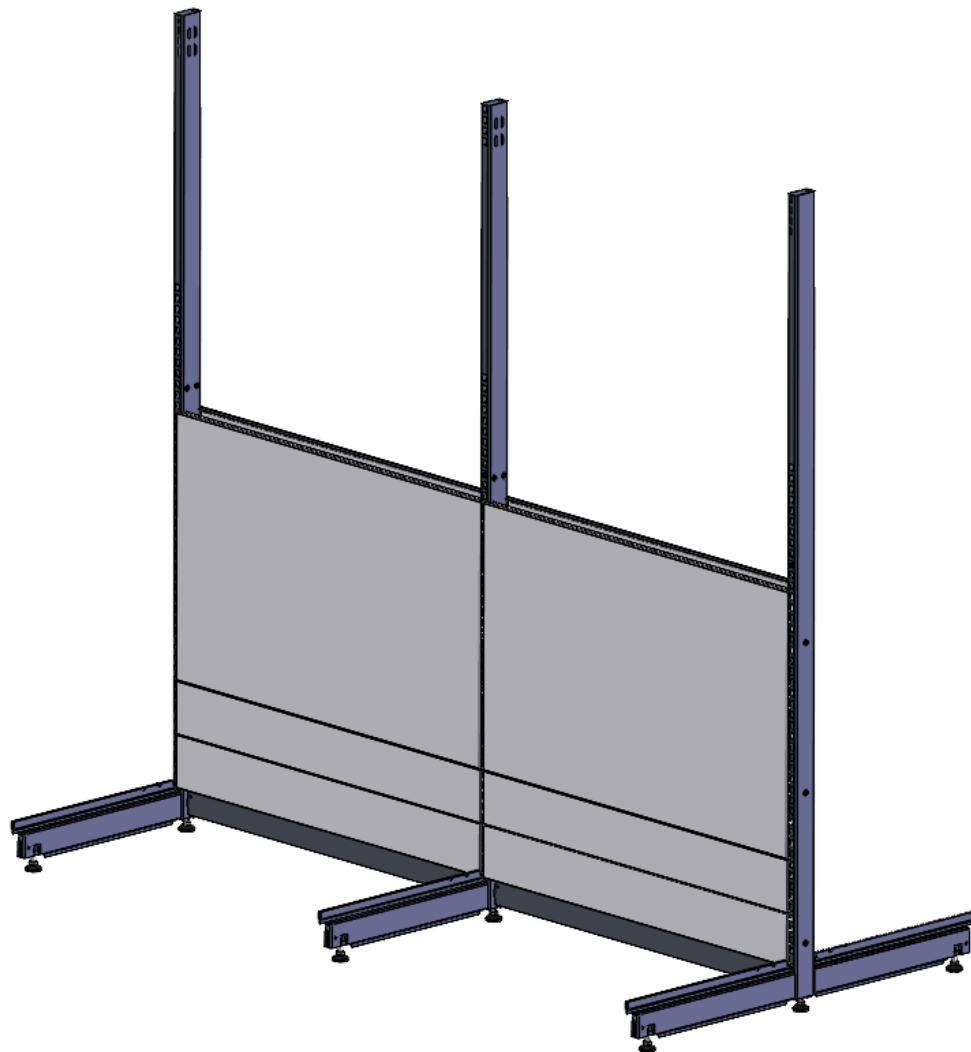
C-STI-009 and C-STI-010

STIHL

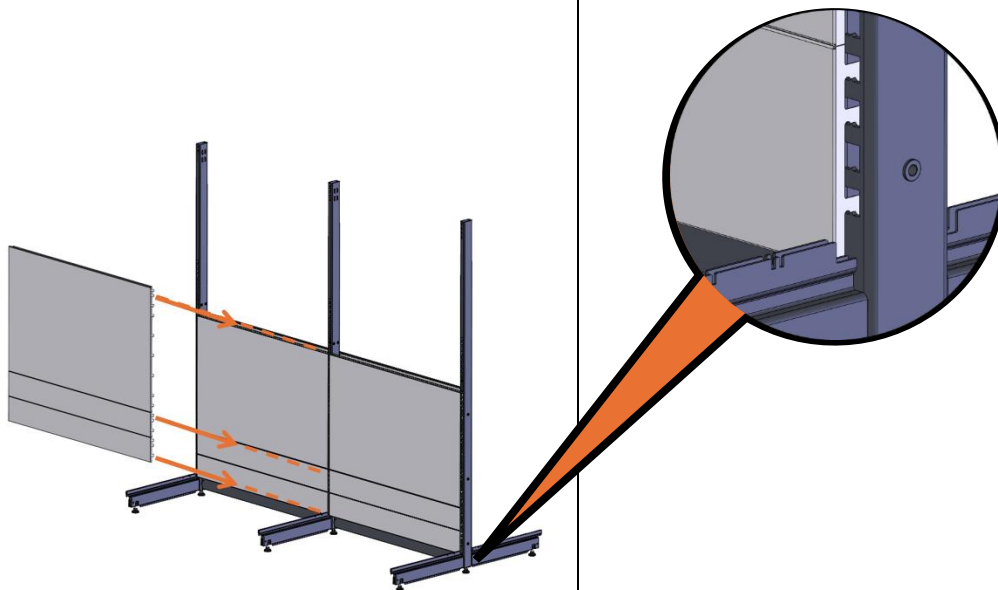
<p>1</p> 		<p>T-end support- 2 pcs T-central support – 1 pc Adjustment screw – 9 pcs</p>  <p>Holder for post screw 60 - 3 pcs</p> <p>Spreader 1000 – 2 pcs</p>  <p>First screw the adjusting screws into the threaded holes on the underside of the T supports, installing 3 pieces on each support. Insert one spreader into the T-end support, then insert this spreader into the T- central support. Take the second spreader and insert it into the T- central support, then insert the T-end support onto the other side. After assembling the support frame, use a spirit level and level the frame using the adjusting screws.</p>
--	--	--



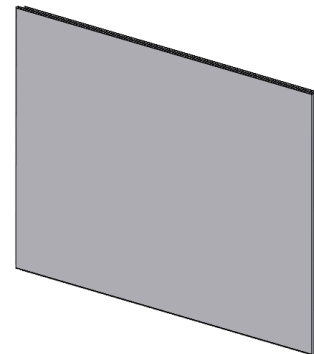
Installation of the back panels



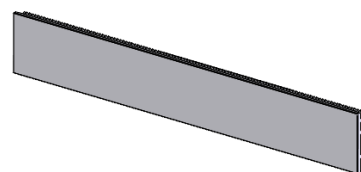
1



Panel 1000x625 – 4 pcs



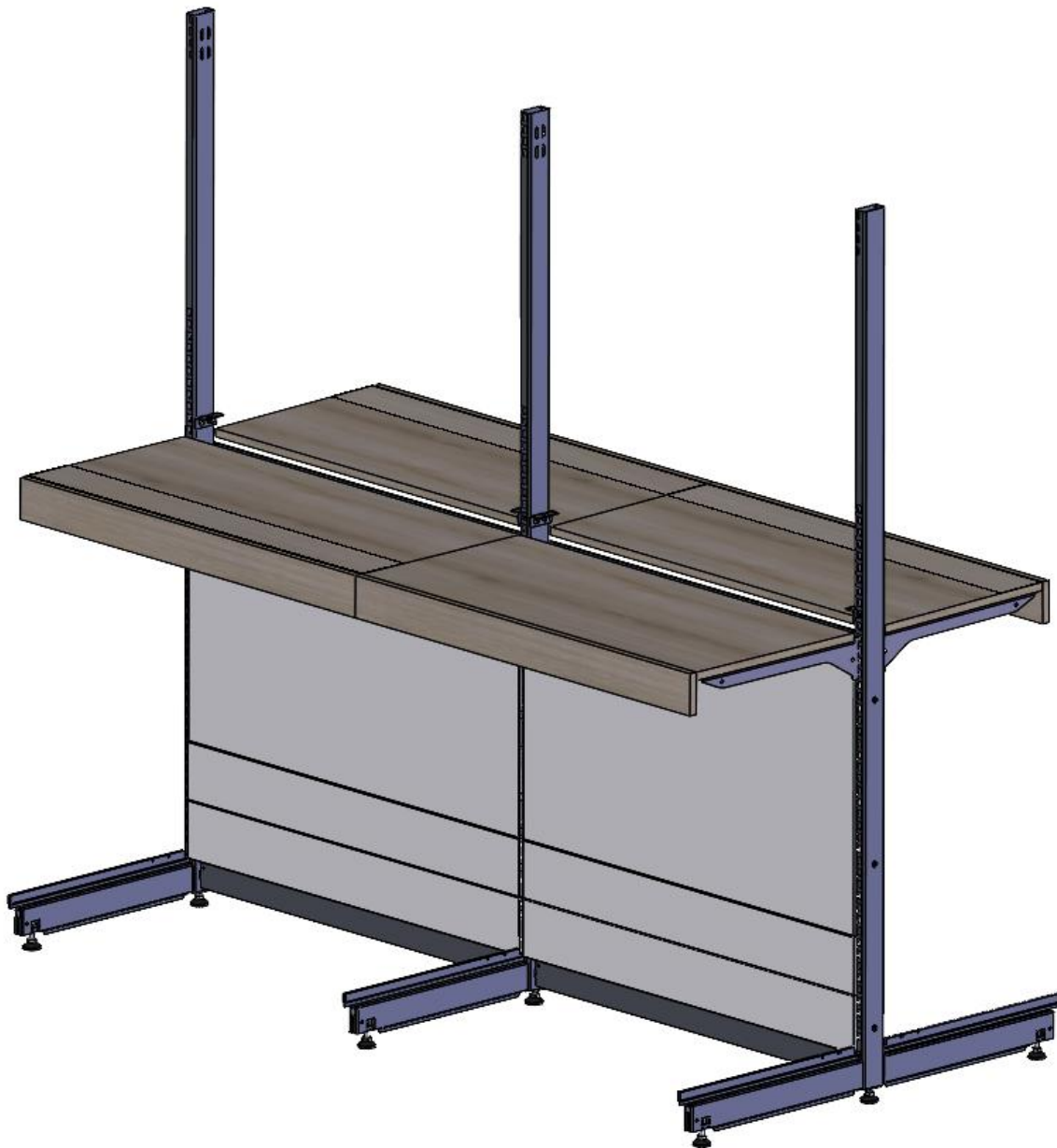
Panel 1000x125 – 8 pcs



Insert the back panels into the openings in the T-uprights. Start with the narrower panels and position them so that the bottom hook on the panel fits into the lowest opening in the upright. Place the second narrow panel above the first one, and place the next narrow panel in the adjacent section. Continue in this way until all 8 narrow panels are installed. Then proceed with the wider panels, installing one wide panel above every two narrow panels. In total, install 4 wide panels.



Installing the shelves



ASSEMBLY INSTRUCTIONS

C-STI-009 and C-STI-010

STIHL

1

Wooden shelf – 4 pcs

L-shaped bracket – 4 pcs

R-shaped bracket – 4 pcs

Wooden screw – 4x16 - 16 pcs
Screw M6x16 DIN 912 – 8 pcs

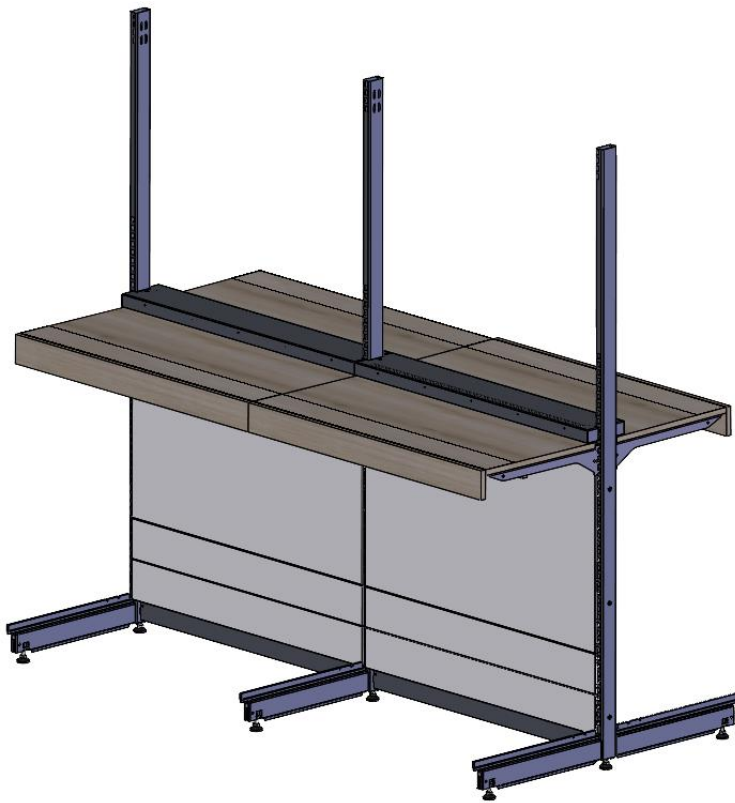
L-shaped bracket – 4 pcs

Hang the shelves with the attached brackets onto the support frame, making sure the shelf is positioned higher than the edge of the back panel. Then screw the L-brackets to the support frame, using two M6×16 screws for each bracket.

First screw the L and R brackets onto the shelves, using two 4×16 wood screws for each



Installation of the cover with safety cable

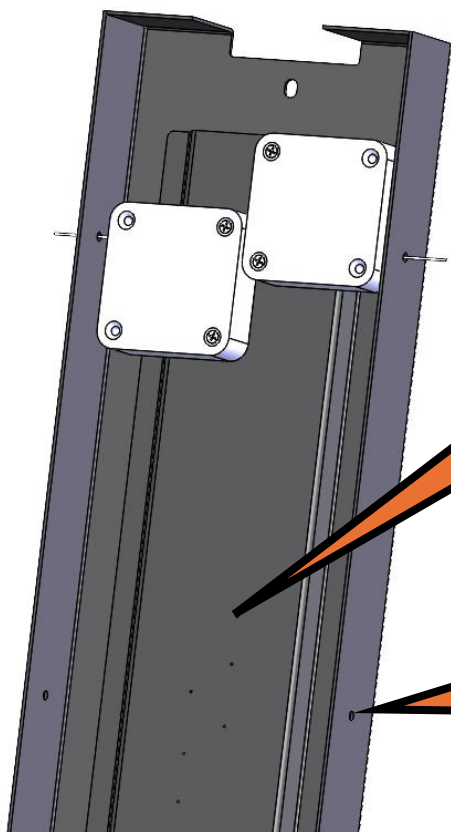


ASSEMBLY INSTRUCTIONS

C-STI-009 and C-STI-010

STIHL

1



Threaded holes

Safety-cable pass-through hole

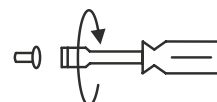
Safety cable bracket – 1 pc



Screw M3x25 DIN 965A – 20 pcs

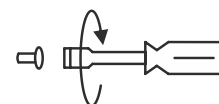


Safety cable – max. 10 pcs



The safety-cable reel is mounted on the inner side of the safety-cable bracket. The reel is fastened with two screws into the threaded holes. The maximum number of safety cables is 10 pieces.

2



To thread the safety cable through the hole in the safety-cable bracket, it is first necessary to remove the two clamps from the cable. Then pull the cable through the hole in the bracket to the outside. Use the first clamp to set the minimum length of cable that should remain freely extended. Pass the free end of the cable through the hole in the product that is to be protected against theft, and use the second clamp to close the loop that holds the product.

I10

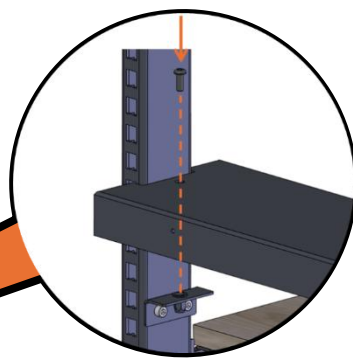
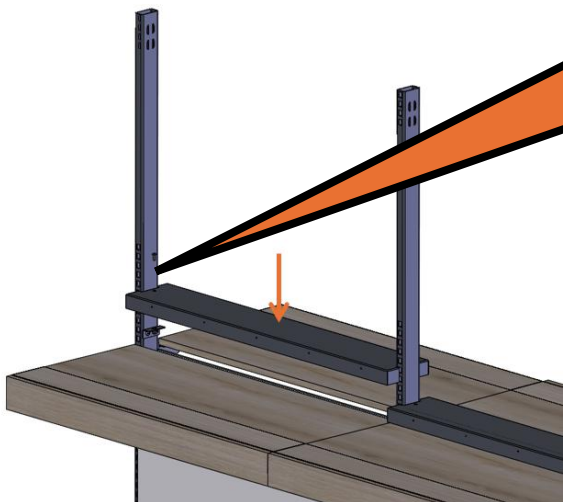


ASSEMBLY INSTRUCTIONS

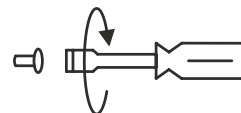
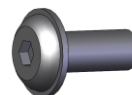
C-STI-009 and C-STI-010

STIHL

3



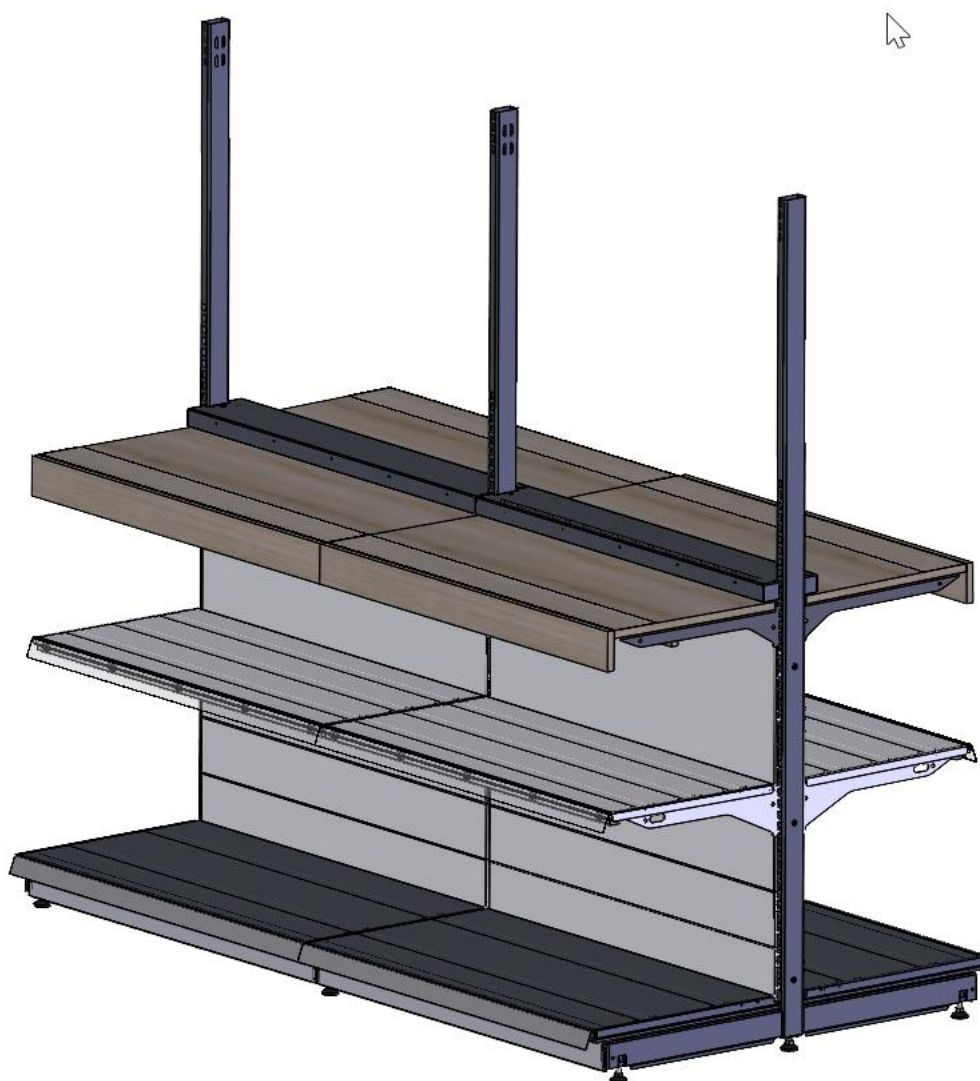
Screw M6x16 ISO 7380 – 4 pcs



Slide the safety-cable bracket between the uprights of the load-bearing frame and fasten it to the brackets using two screws.



Installation of the plinths, bottom shelf, and middle shelf

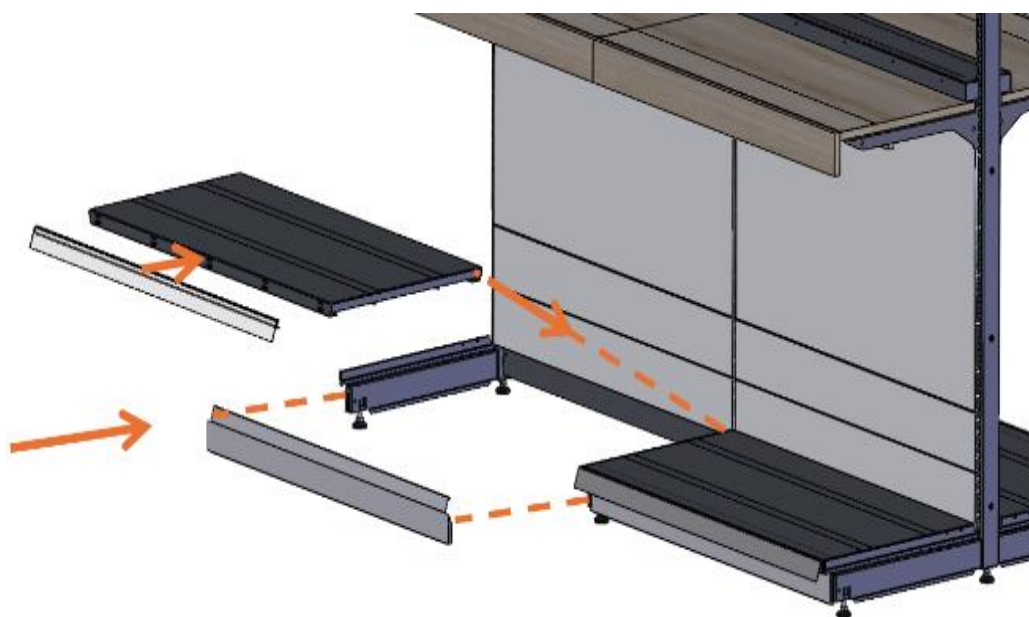


ASSEMBLY INSTRUCTIONS

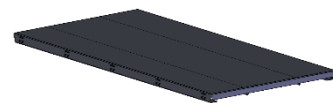
C-STI-009 and C-STI-010

STIHL

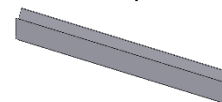
1



Bottom shelf – 4 pcs



Plinth – 4 pcs



Price strip – 4 pcs



First, we install the plinth into the supporting uprights, then insert the bottom shelf, and finally snap the price strip into the bottom shelf.

Repeat the same procedure with the remaining shelves, plinths, and the price strip on the neighboring gondola and on the opposite side.

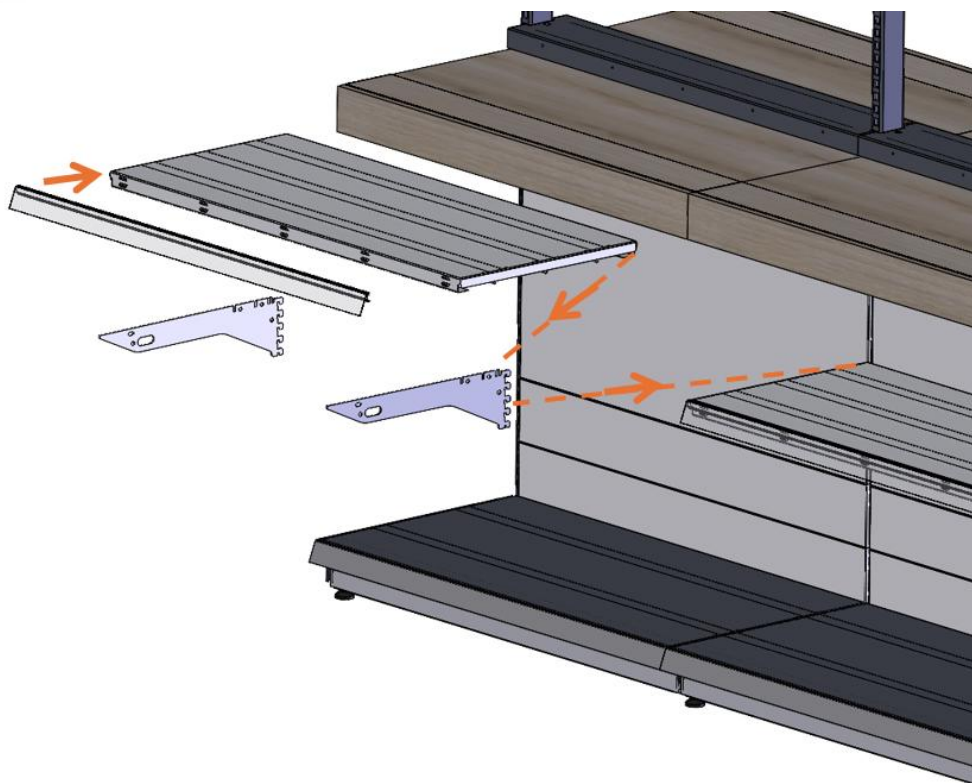


ASSEMBLY INSTRUCTIONS

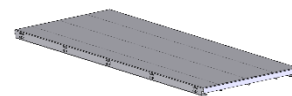
C-STI-009 and C-STI-010



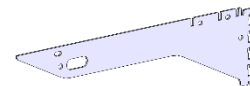
2



Shelf – 4 pcs



Bracket – 4 pcs

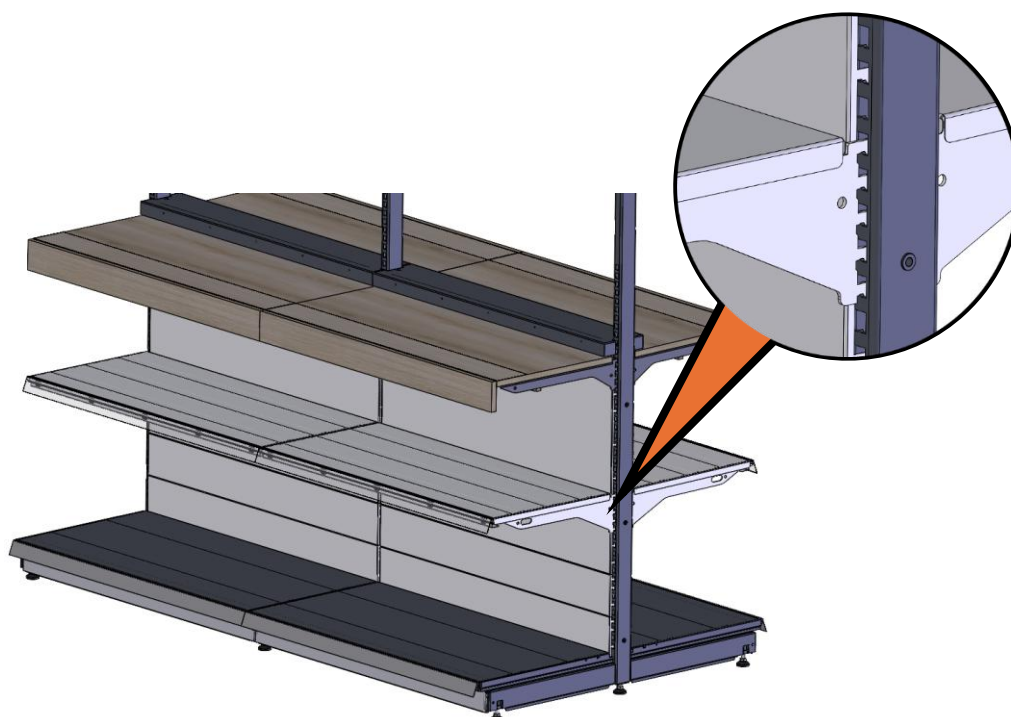


Price strip – 4 pcs

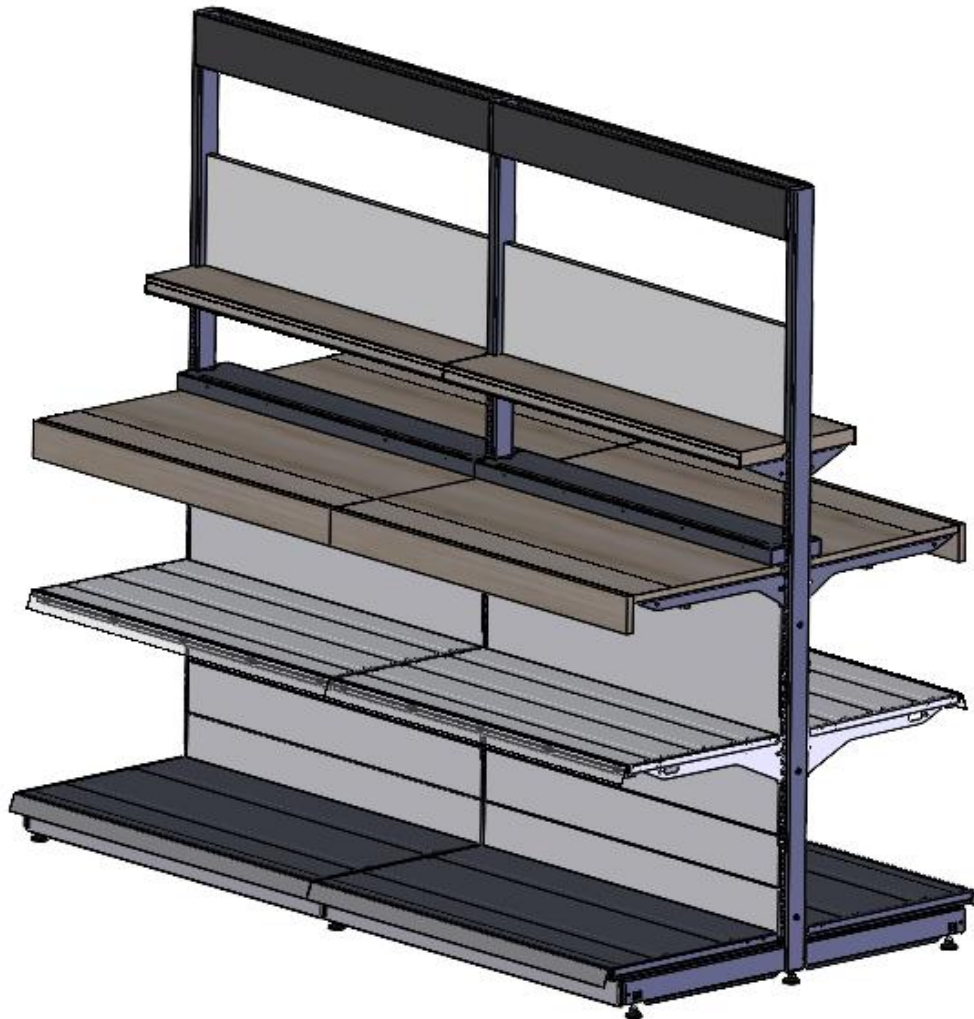


First, we install the brackets into the uprights, choosing the height at which we want the shelf. Each shelf can be at a different height. Next, we place the shelf onto the brackets. Finally, we snap the price strip into the shelf.

First, we install the brackets into the uprights, choosing the height at which we want the shelf. Each shelf can be at a different height. Next, we place the shelf onto the brackets. Finally, we snap the price strip into the shelf.



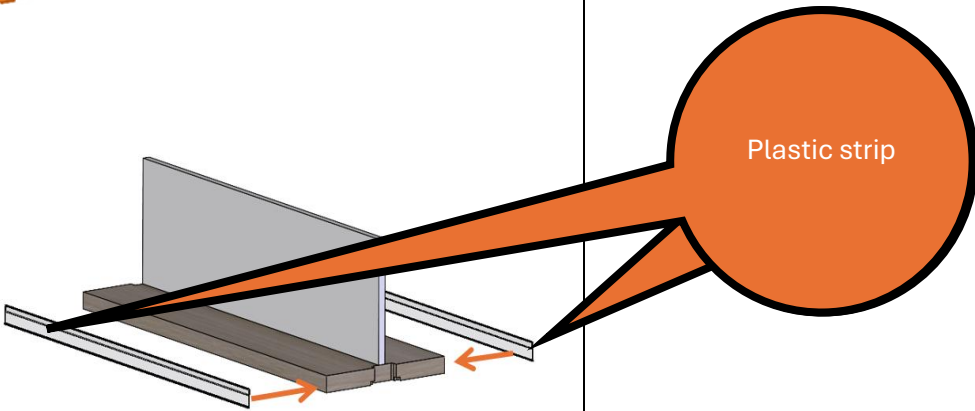

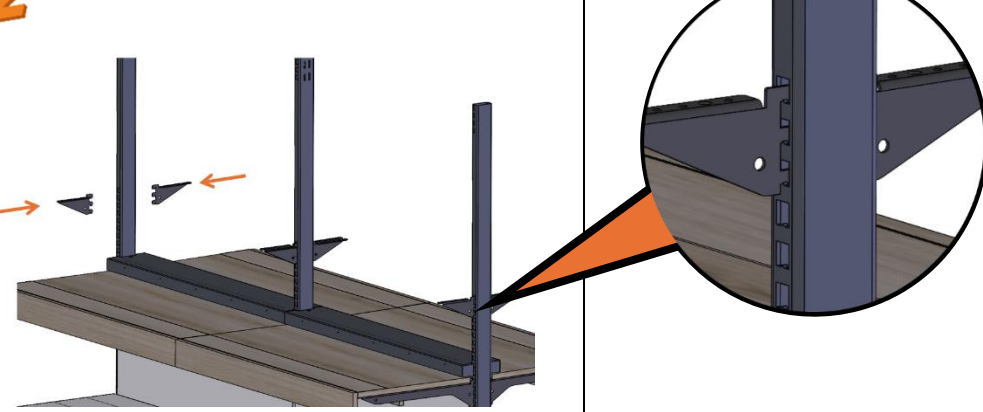

Installing the top shelf and the top cover



ASSEMBLY INSTRUCTIONS

C-STI-009 and C-STI-010

STIHL

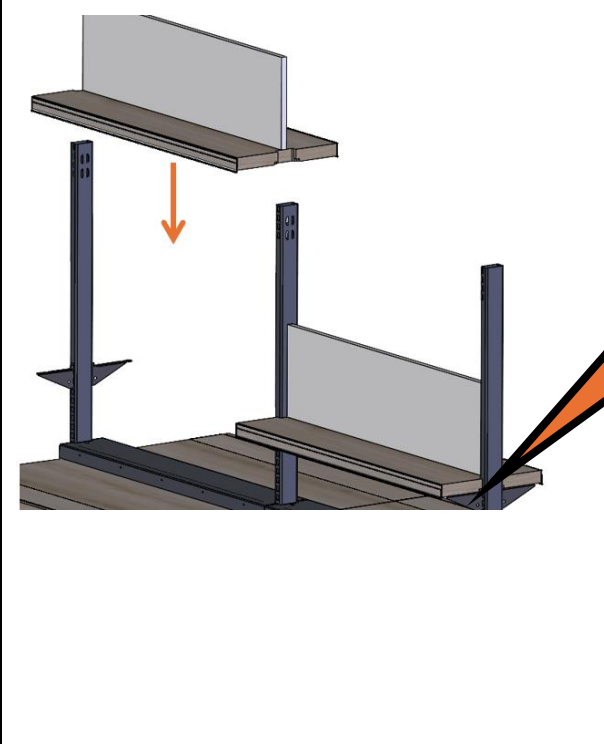
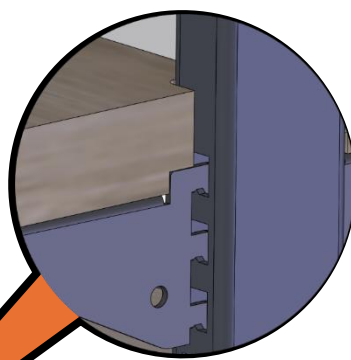

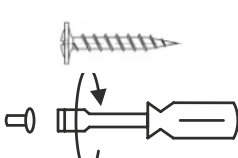
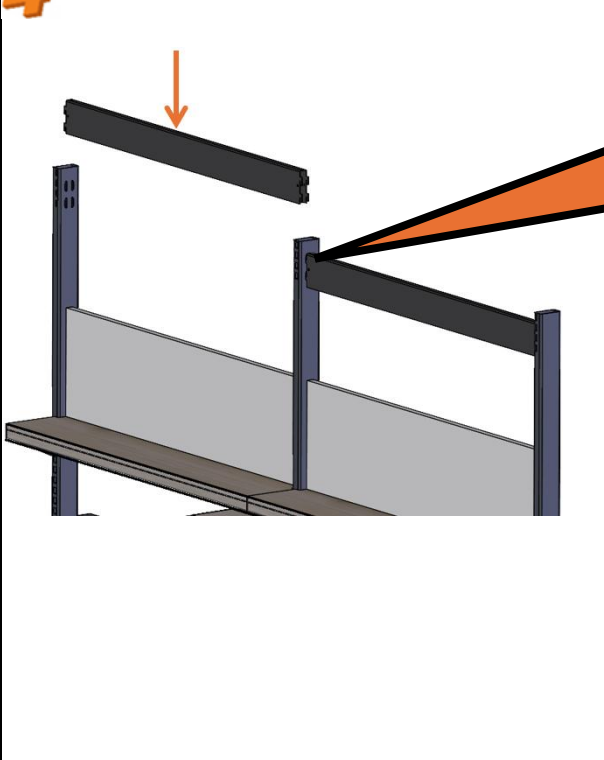
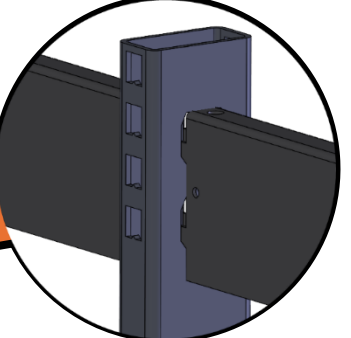
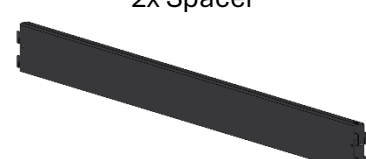

<p>1</p> 		<p>Plastic strip – 2 pcs</p>  <p>The plastic strip has double-sided adhesive tape applied to its back side. Remove the protective layer from the tape and stick the strip onto the side of the shelf. The top edge of the strip must be aligned with the top surface of the shelf</p>
<p>2</p> 		<p>P-bracket – 4 pcs</p>  <p>L-bracket – 4pcs</p> <p>Insert the bracket into the lock on both sides</p>



ASSEMBLY INSTRUCTIONS

C-STI-009 and C-STI-010

STIHL

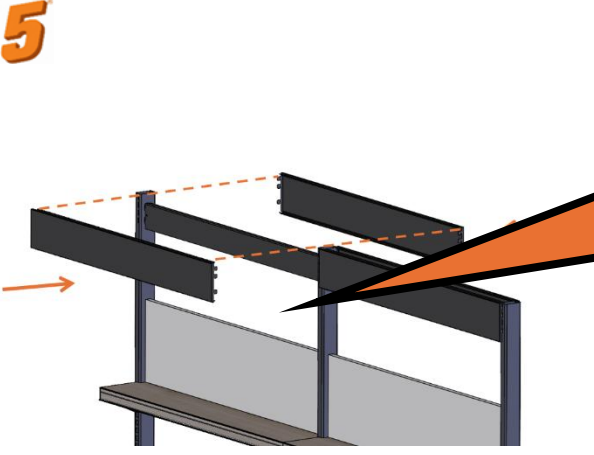
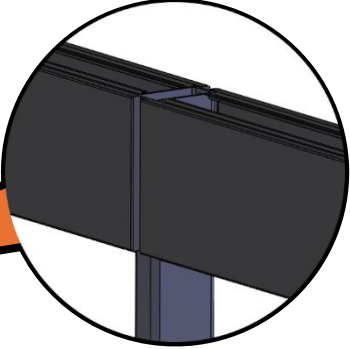
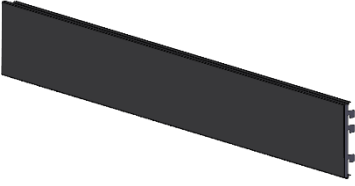

<p>3</p> 		<p>Slide the T-bracket between the legs and place it on the brackets</p>  <p>Secure the shelf to the brackets using 16x Ø4x16 DIN7505 screws</p>  <p>The brackets are aligned with the side of the shelf; for easier positioning, there is a small recess in the shelf into which we insert the protrusion on the bracket.</p>
<p>4</p> 		<p>2x Spacer</p>  <p>Insert the spacer into the locks between the legs.</p> 



ASSEMBLY INSTRUCTIONS

C-STI-009 and C-STI-010

STIHL

<p>5</p> 		<p>Rear section 4x</p>  <p>Attach the rear section to the stand locks</p> 
---	--	--



ASSEMBLY INSTRUCTIONS

C-STI-009 and C-STI-010

STIHL



We make successful stores.

umdasch Story Design s.r.o.,

umdasch Story Design a.s. Moravská 949, 57001 Litomyšl, Czechia

www.umdasch.com | [A company of Umdasch Group](#)

