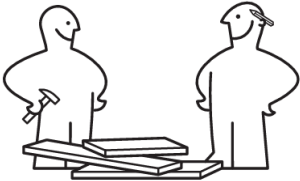
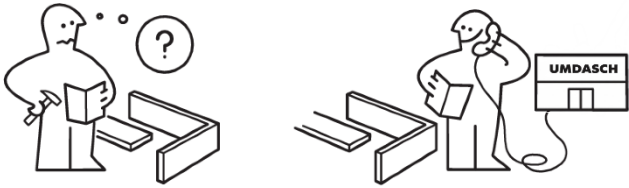

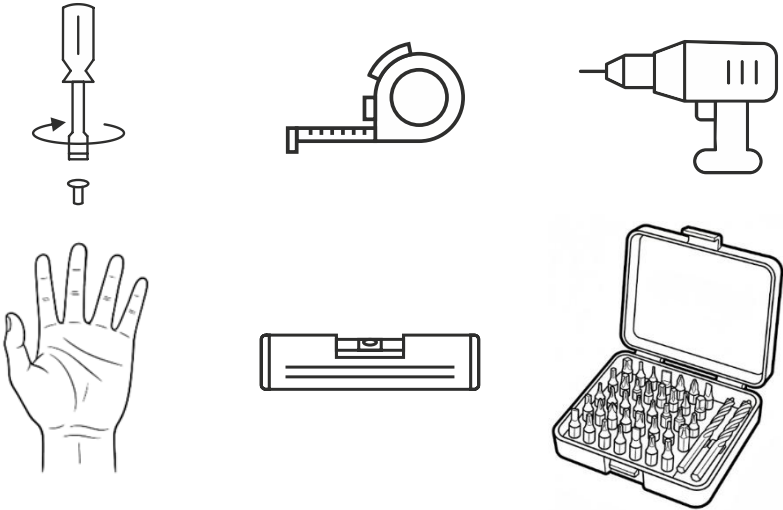


# ASSEMBLY INSTRUCTIONS

STI-4

# STIHL

	<p>1 person required for assembly separately packed box, 60 kg 5 boxes with total weight 18 kg</p>
	<p>Ivo Fryauf: <a href="mailto:ivo.fryauf@umdasch.com">ivo.fryauf@umdasch.com</a> +420724303815</p> <p>Václav Dopita: +420727861651 <a href="mailto:vaclav.dopita@umdasch.com">vaclav.dopita@umdasch.com</a></p>
	<p>Recommended protective equipment</p>
	<p>Tools required for assembly</p>



# VARIANTS<sup>®</sup>



**VARIANT 1<sup>®</sup>**



**VARIANT 2<sup>®</sup>**



**VARIANT 3<sup>®</sup>**



**VARIANT 4<sup>®</sup>**




**VARIANT 5<sup>®</sup>**



**VARIANT 6<sup>®</sup>**



**VARIANT 1<sup>®</sup>**

<p><b>1</b></p> 		<p>Basic variant, no assembly required.</p>
---	--	---

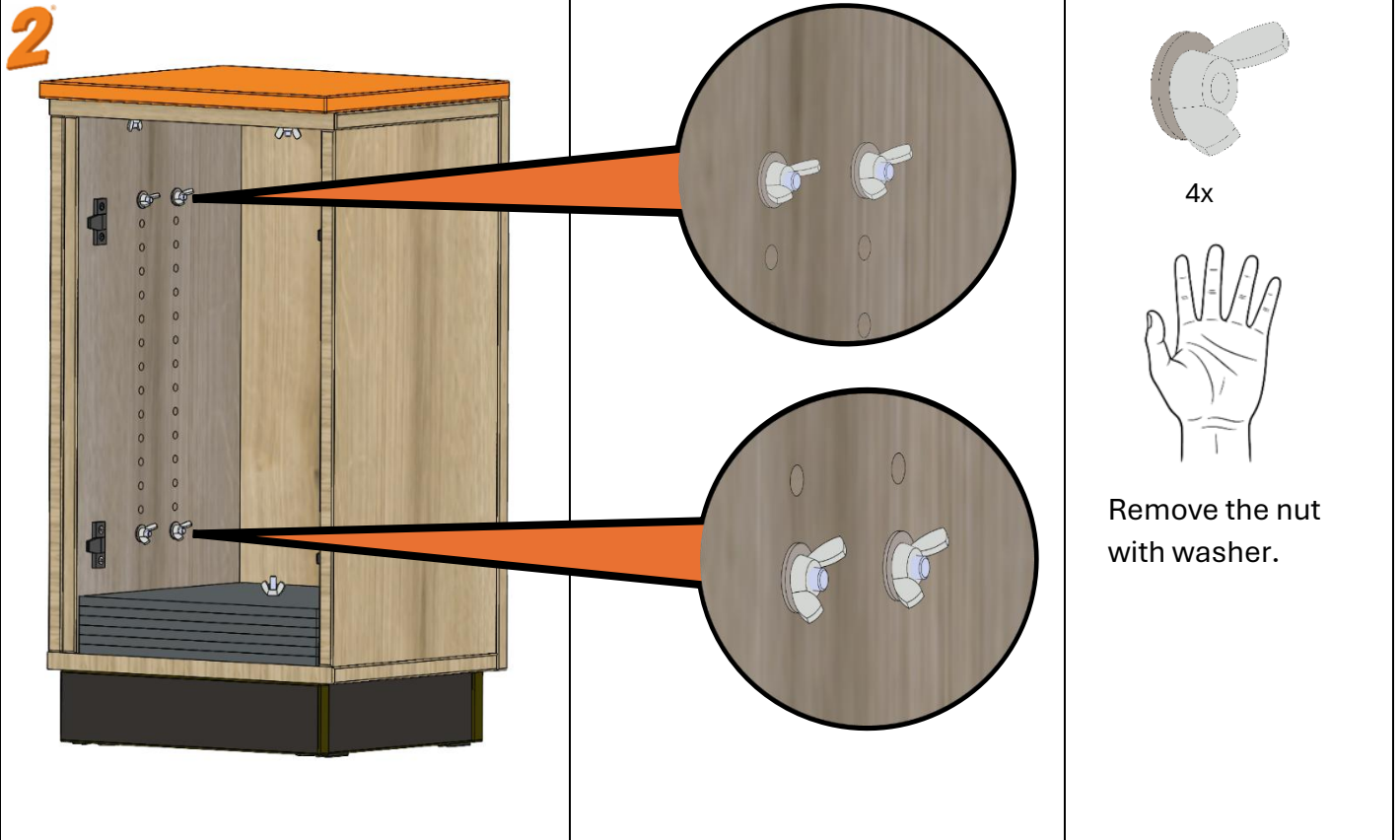


**VARIANT 2®**

<p><b>1</b></p>		<p>Remove the back cover.</p>
-----------------	--	-------------------------------



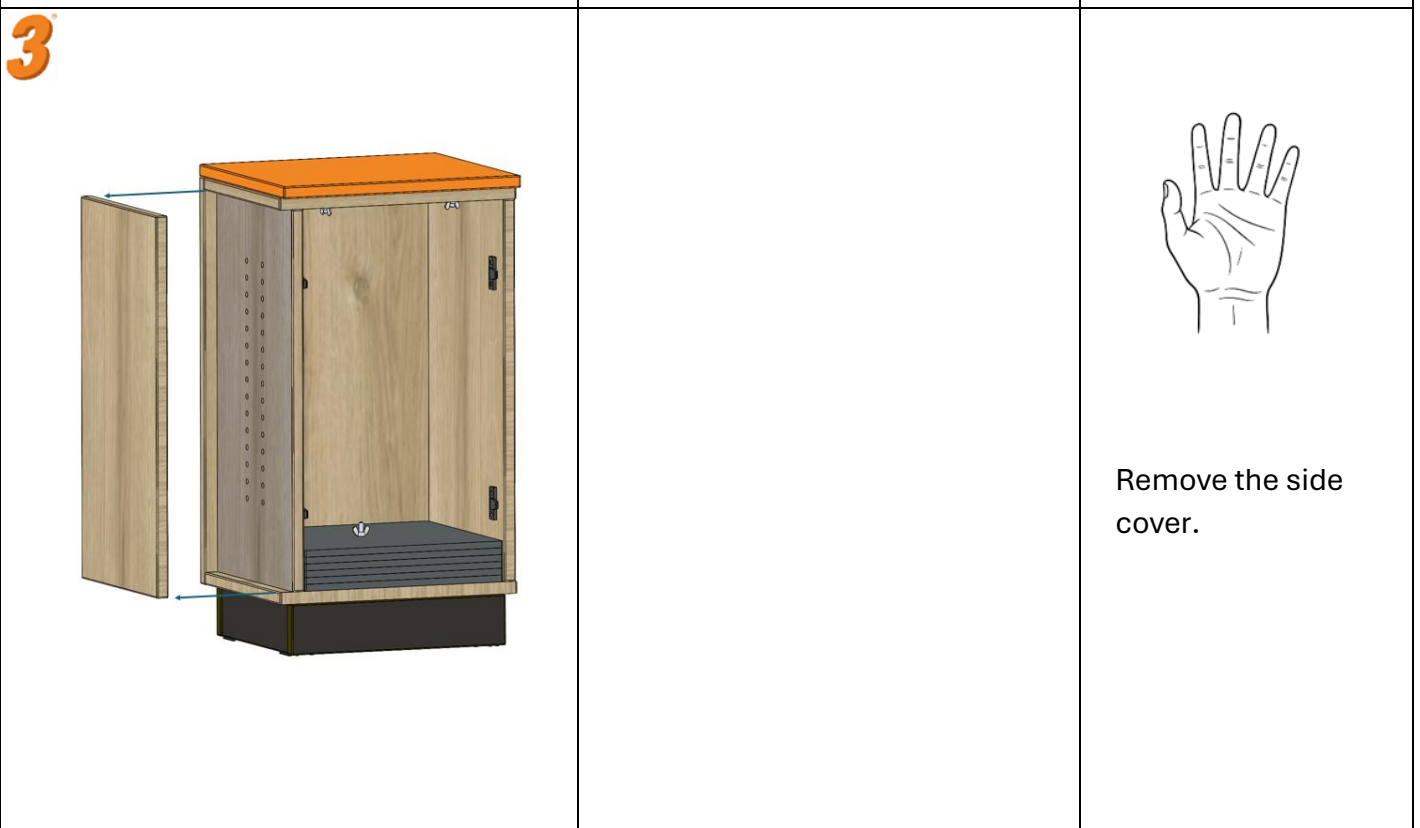
**2**



4x

Remove the nut with washer.

**3**



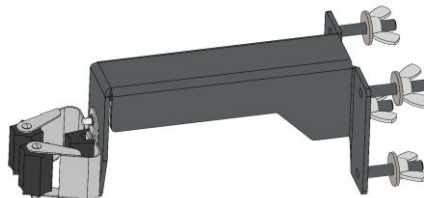
Remove the side cover.

# ASSEMBLY INSTRUCTIONS

STI-4

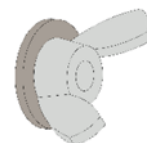
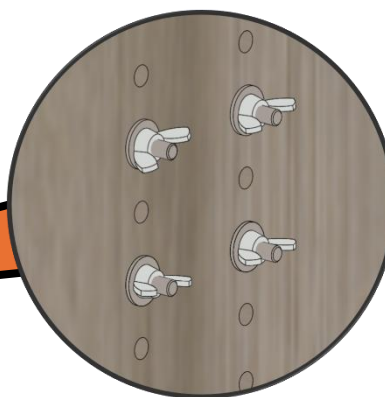
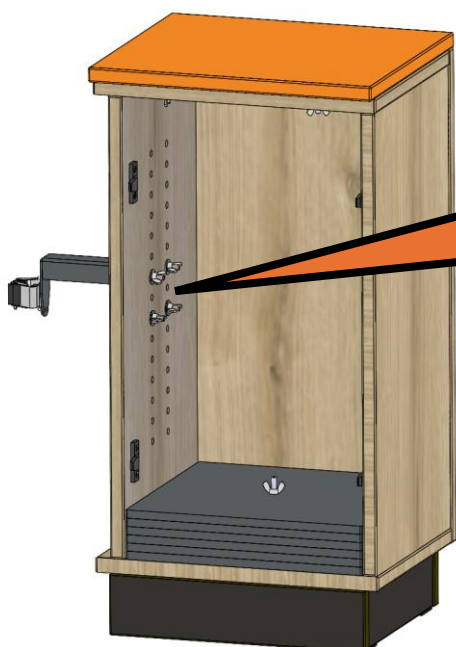
# STIHL

## 4



Remove the four wing nuts and washers from the bracket. Choose the height at which the bracket is to be positioned, and insert the threaded rods into the holes in the box.

## 5



4x



Attach the bracket using nuts and washers.

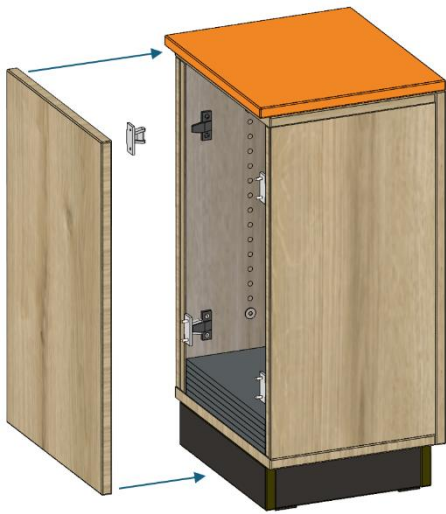


# ASSEMBLY INSTRUCTIONS

STI-4

# STIHL

## 6

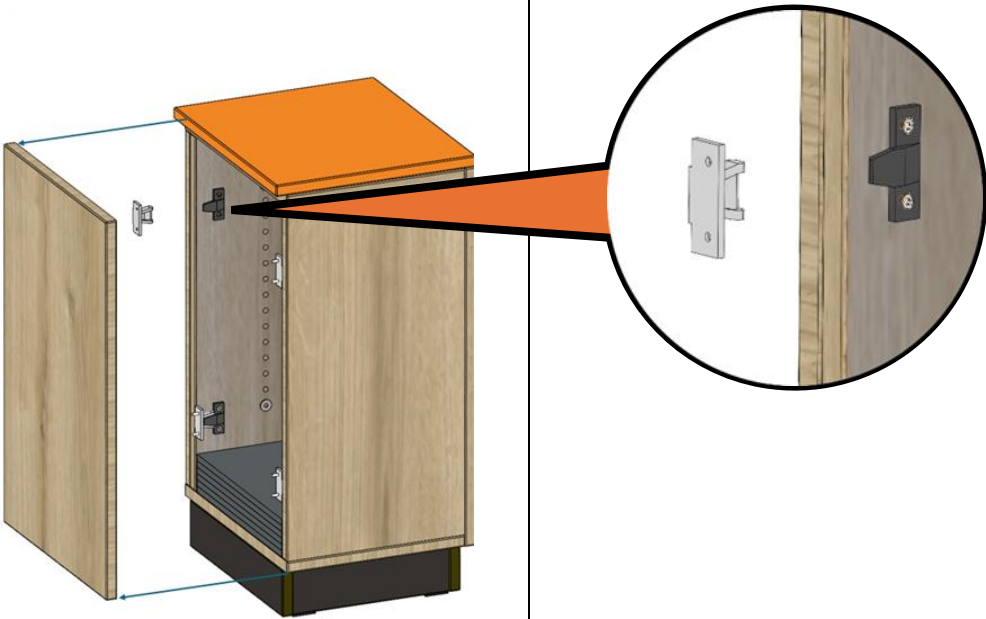




Put the back cover back.





**VARIANT 3<sup>®</sup>**

<p><b>1</b></p> 		 <p>Remove the back cover.</p>
--	--	---

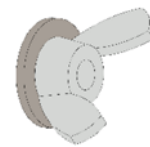
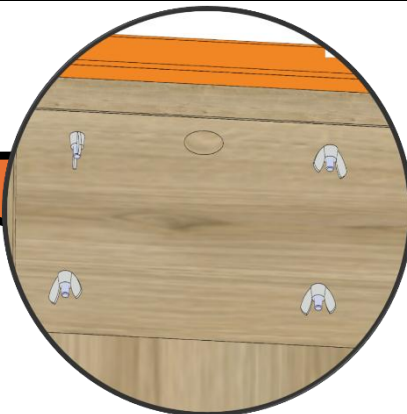


# ASSEMBLY INSTRUCTIONS

STI-4

# STIHL

2



4x



Remove the nut with washer.

3



Remove the top plate.



# ASSEMBLY INSTRUCTIONS

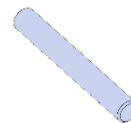
STI-4

# STIHL

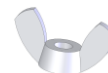
## 4



Threaded rod  
M6x45 DIN 975 – 2 pcs

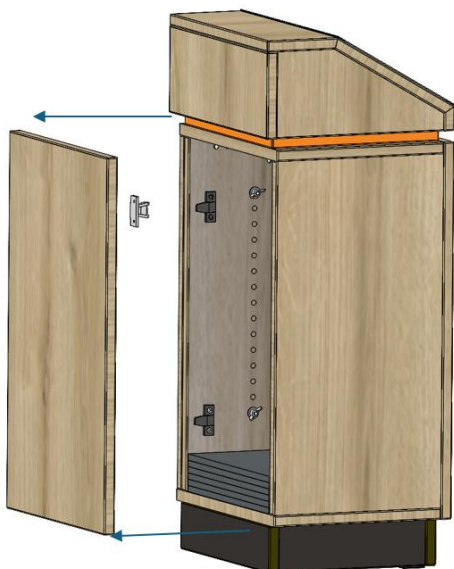


Wing nut  
M6 BN 213 - 2 pcs



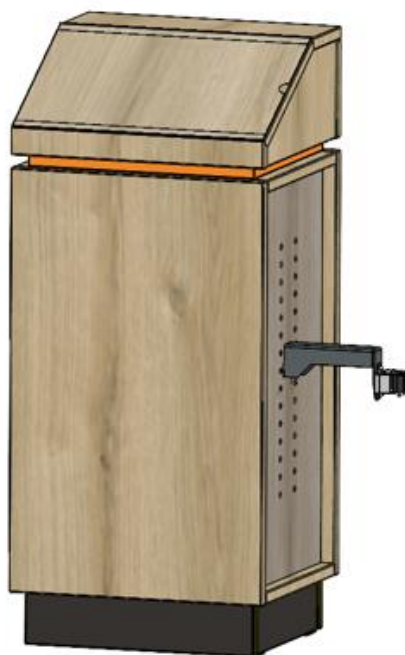
Place the top part on the box and attach it to the box using threaded rods and nuts.

## 5




Put the back cover back.





VARIANT 4®

<p><b>1</b></p> 	<p>Pages 10 and 11</p> <p>Pages 6 and 8</p>	<p>Remove the back cover and use the same steps as on pages 6 and 7 for mounting the bracket. For mounting the top part, use the procedure from pages 10 and 11. Finally, reinstall the back cover according to page 8</p>
---	---	--





**VARIANT 5<sup>®</sup>**



**VARIANT 6<sup>®</sup>**

**1**



Pages 10  
and 11



After removing the back cover, continue according to pages 10 and 11. Choose the top part that has mounting holes for the brackets in the plates

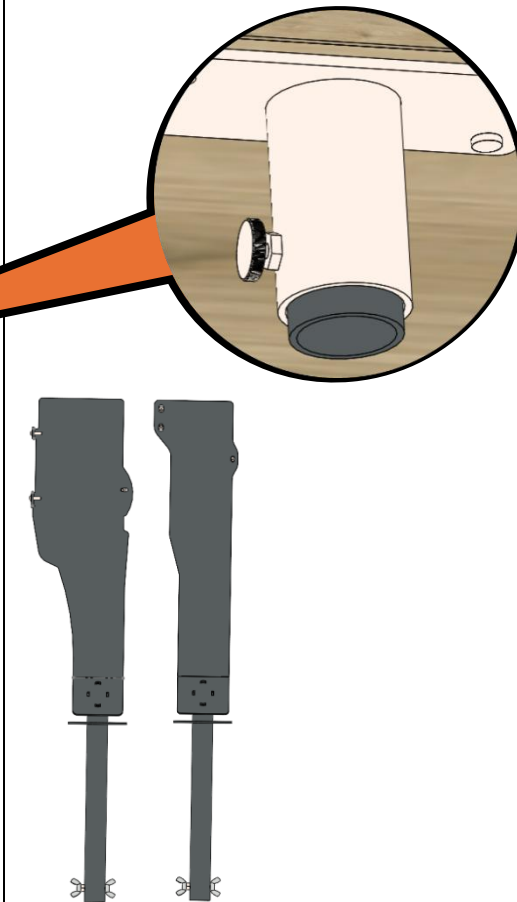
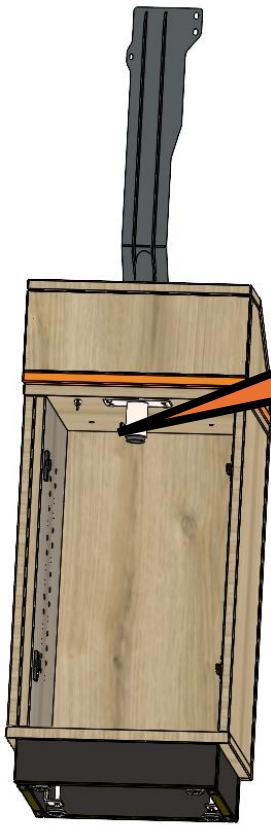


# ASSEMBLY INSTRUCTIONS

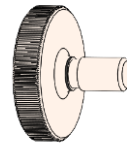
STI-4

# STIHL

## 2



The locking knob is part of the bracket.



Insert the bracket into the hole and secure it to prevent it from being pulled out. The procedure is the same for both types of brackets. Finally, reinstall the back



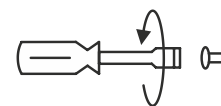
**MS 500i Holder®**



1



remove three screws



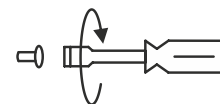
First, it is necessary to remove three screws from the saw that is to be attached to the holder.

2



Two IS-M5x14-10.9 screws

One screw IS-M4x20-10.9



Two IS-M5x14-10.9 screws and one IS-M4x20-10.9 screw are used to secure the saw.



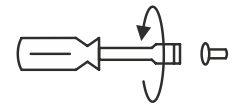
**MS 300 Holder®**



1



remove three screws



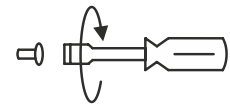
First, it is necessary to remove three screws from the saw that is to be attached to the holder.

2



Two P6x32,5 8.8 screws

One screw IS-M4x20-8.8



Two P6x32,5 8.8 screws and one IS-M4x20-8.8 screw are used to secure the saw.





**We make successful stores.**

**umdasch Story Design s.r.o.,**

umdasch Story Design a.s. Moravská 949, 57001 Litomyšl, Czechia

[www.umdasch.com](http://www.umdasch.com) | [A company of Umdasch Group](#)

